

REGISTER NOW
STAY UP TO DATE

2007 President's Seminar

The VTAC annual seminar will be held on Friday 2 March 2007 from 10.00am at the VTAC office. Invitations and an agenda will be sent to regional careers groups in early February.

You are invited to contribute

If you have any ideas or issues you would like to see addressed or discussed at the Seminar, contact David Osborne, Manager Schools Liaison at davido@vtac.edu.au

Amendments to course information

VTAC Guide 2007 - RMIT University

As a result of a decision by the Victorian Institute of Teaching applicants without a satisfactory VCE mathematics study will be required to demonstrate competence in mathematics, and may be required to complete additional mathematics study for the following course

- Education
RMIT Uni, Bundoora: 31641 (CSP),
31642 (Fee), 31643 (Int. Fee)

VICTER 2008

Victoria University

As a result of a decision by the Victorian Institute of Teaching applicants without satisfactory VCE mathematics study will be required to demonstrate competence in mathematics, and may be required to complete additional mathematics study.

The relevant courses are:

- Education (P-12)
- Education (P-12)-Accelerated Program
- Education (P-12)-Creativity and the Arts

- Education (P-12)-General
- Education (P-12)-Mathematics Teaching
- Education (P-12)-Outdoor Education
- Education (P-12)-Physical Education (Primary)
- Education (P-12)-Science Teaching

VICTER 2009

RMIT University

Education: Prerequisites: Units 1 and 2 - mathematics (any). Units 3 and 4 – English (any).

Victoria University

The prerequisite statement for each of the listed courses will now read:

Prerequisites: 'Units 1 & 2: mathematics (any) Units 3 and 4: a study score of at least 20 in English (any)

- Education (P-12)
- Education (P-12)-Creativity and the Arts
Education (P-12)-General
- Education (P-12)-Outdoor Education
- Education (P-12)-Physical Education (Primary)

Prerequisites: 'Units 1 & 2: mathematics (any) Units 3 and 4: a study score of at least 20 in English (any) and in one of biology, chemistry or physics.

- Education(P-12)-Science Teaching

Forgotten your PIN?

Check your mail, VTAC has sent you a reminder of your VCAA student number and PIN.

Still can't find it, click on the 'lost PIN' link on the front page of the website and follow the prompts.

Can't remember your VCAA student number or VTAC application number?

If you know your PIN, telephone VTAC for further assistance.

Remember your VCAA student number is identical to your VTAC application number.

VTAC Information for Careers Teachers

CourseLink

ENTERs will be available to schools for downloading via VTAC CourseLink between 4pm Sunday 10 and 7am Monday 11 December, 2006. All links to this program will be removed from the VTAC website until 12noon on Monday 11 December, schools are advised to download and save a copy of this data.

Students will be able to access their ENTERs from 7am Monday 11 December.

When accessing CourseLink, schools and their staff are reminded about the requirements associate with the VTAC privacy policy.

Forgotten your CourseLink name/password?

If you have lost your school's user name and password you must fax your signed request to VTAC on school letterhead. This request must be signed by the school principal. Requests received after 5pm on Thursday 7 December will not be processed until after 2pm Monday 11 December.

Instructions for accessing data

- Go to VTAC CourseLink, Teacher Access www.vtac.edu.au
- Type in your user name and password. Go to Student ENTER Report - ENTERs are available in 'Rank' order.

contents

Copies of previous bulletins are available online www.vtac.edu.au

2007 Presidents Seminar

Amendments to course information

VICTER update

Student PINs

VTAC information for careers teachers

Results/ENTERs (PRES)

Change of preference

Final course list

Important dates

IMPORTANT NOTICE

VTAC will close for the annual Christmas/New Year closedown period as follows:

Monday, 25 December 2006 (Christmas Day)

Tuesday, 26 December 2006 (Boxing Day)

Wednesday, 27 December 2006

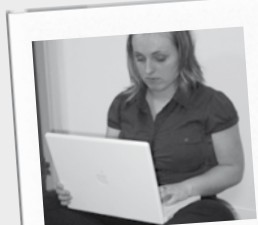
Thursday, 28 December 2006

Friday, 29 December 2006

Monday, 1 January 2007 (New Year's Day)

We wish you a safe and happy festive season.

-VTAC Staff



2006 VCE Results and ENTER Service

To assist you in accessing your VCE results, ENTER subject scores and ENTER, the VCAA and VTAC will run a joint service called, The 2006 VCE Results and ENTER Service.

To access your results on this service you will need your *VCAA student number* and *PIN*.

If you are a VTAC applicant use your VTAC PIN. If you are not a VTAC applicant use the first four digits of your birth date (e.g. 22 June = 2206).

This service offers three options for accessing your VCE results and ENTER:

The Internet – results.vcaa.vic.edu.au

Your results will be available on the internet from 7am Monday 11 December to 12noon on Monday 18 December 2006 (AEDST).

The internet service is free and will operate 24 hours per day.

Log onto results.vcaa.vic.edu.au using your VCAA student number and PIN.

SMS – 19 787 888

VCE results and ENTER are sent by SMS from **7am on Monday 11 December 2006**.

To receive an SMS notification you must pre-register between:

9am Monday 13 November – 12midnight Sunday 10 December 2006 by sending your VCAA student number and PIN to 19 787 888 (Legion Interactive cost \$1.10 max inc. GST) in the following format:

SSSSSSS PPPP

In the example above SSSSSSSS represents the first 8 digits of your student number, PPPP represents your PIN and there is a space between them. Late SMS registrations will be responded to as soon as possible from **9am on Monday 11 December 2006**.

Telephone – 1900 957 888

Results are available on the telephone from **7am Monday 11 December to 5pm Thursday 14 December 2006**.

Telephone 1900 957 888 (Legion Interactive cost \$1.93 per minute inc. GST) and follow the prompts.

Post Results Enquiry Service (PRES)

VCE results and ENTER statements will be posted to applicants and are due for arrival from Tuesday 12 December 2006.

If you have any questions once you have received your ENTER and VCE results you may contact the Post Results Enquiry Service (PRES) — a joint information service offered by VTAC and VCAA. You cannot access VCE results or ENTER from the PRES.

You can access the PRES by:

- » **telephone:** (03) 9651 4640 or 1800 653 080 (toll free)
- » **email:** pres.vcaa@edumail.vic.edu.au

The PRES will operate from:

- » 7am until 5pm Monday 11 December 2006
- » 9am until 5pm Tuesday 12 to Thursday 14 December

If for any reason, you do not receive your ENTER statement from VTAC or VCE results from the VCAA – don't panic – it may be held up in the mail.

Before calling the PRES:

- » check with Australia Post, or
- » if you have moved, check your old address.

For the latest information about the 2006 VCE Results and ENTER Service and the PRES refer to:

The VTAC website: www.vtac.edu.au

The VCAA website: www.vcaa.vic.edu.au



Change of preference: information sessions and hotline details

Australian Catholic University (ACU National)

Website: <http://www.acu.edu.au/2007>

Change of preference hotlines:

Melbourne Campus: 03 9953 3062

Ballarat Campus: 03 5336 5361

Information sessions:

- *Melbourne Campus:*
Tuesday 12th December (from 5.30pm) at
115 Victoria Parade Fitzroy VIC 3065

Email: studentcentre@patrick.acu.edu.au
- *Ballarat Campus:*
Wednesday 14th December (from 4.30pm) at
1200 Mair Street Ballarat VIC 3350

Email: studentcentre@aquinas.acu.edu.au

The Australian College of Sports Therapy

Website: www.sportstherapy.edu.au

Change of preference hotline: (03) 9650 2322

Monday 11 to Friday 15 December (9.00am to 4.30pm)

Monday 18 December (9.00am to 4.30pm)

Email: courses@sportstherapy.edu.au

Australian Institute of Fitness/Massage

Website: www.institute.edu.au

Change of preference hotline:

1300 669 669 (8.00am - 6.00pm weekdays).

Twilight Information Session: Monday 11th December 2006
(6pm to 7:30pm) at Elsternwick Campus

Campus details: 233 Glenhuntly Road Elsternwick VIC 3185

Australian Institute of Public Safety

Website: www.aims.edu.au

Change of preference hotline: (03) 9654 6666

Box Hill Institute of TAFE

Website: www.bhtafe.edu.au

Change of preference hotline: 1800 068 077

Information sessions:

- *Biotechnology, Laboratory and Animal Technologies:*
Thursday 14 December at 6.30pm.

Location: Level 2, Building 8, Elgar Campus,
465 Elgar Road, Box Hill
(Parking available under Building 8).
- *Information and Computer Technologies (ICT):*
Thursday 14 December at 7.00pm

Location: Room N1.161, Nelson Campus,
853 Whitehorse Road, Box Hill.

- *Library & Information Services:*
Thursday 14 December at 7.00pm

Location: Room N1.161, Nelson Campus,
853 Whitehorse Road, Box Hill.

Charles Sturt University

Website: www.csu.edu.au

Change of preference hotline: 1800 334 733
(8.30am - 5.30pm, weekdays from Monday 4 to Monday
18 December)

Email: inquiry@csu.edu.au

Chisholm Institute

Website: www.chisholm.vic.edu.au

Change of preference hotline:
1800 444 220 (8.30am - 5.00pm weekdays)

Email: enquiries@chisholm.vic.edu.au

Twilight Information Evening:

- *Dandenong Campus:*
Wednesday 13 December (4.00 pm - 7.00 pm)

Location:

Ground Floor, Building G, 121 Stud Road, Dandenong.

- *Frankston Campus:*
Wednesday 13 December (4.00 pm - 7.00 pm)

Location:

Atrium, Building A, Fletcher Road, Frankston

- *Rosebud Campus:* Theatre, Boneo Road, Rosebud.

Deakin University

Website: www.deakin.edu.au/cop

Change of preference hotline: 1800 242 251
(8.30am to 5.00pm weekdays).

Information sessions:

- *Melbourne Campus at Burwood:*
Tuesday 12 December (6.15- 7.15pm)

Location:

Building hc, lecture theatre 13,
221 Burwood Highway, Burwood.

- *Geelong Campus at Wairn Ponds:*
Tuesday 12 December (6.15- 7.15pm).

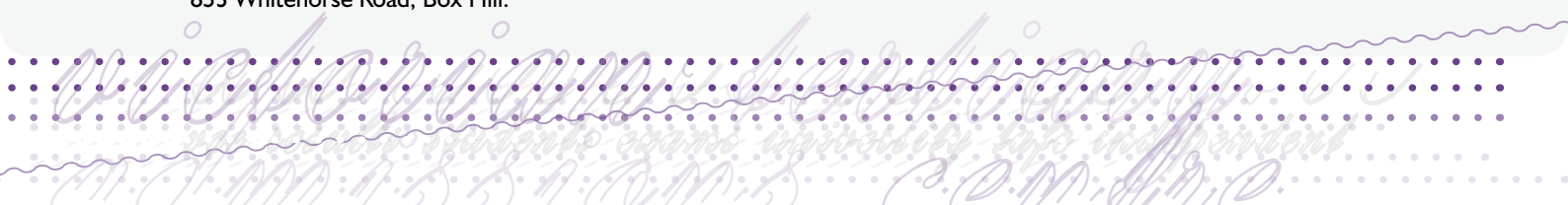
Location:

Peter Thwaites lecture theatre on Alfred Deakin Drive,
Pigdons Rd, Wairn Ponds.

Campus tours:

- *Melbourne Campus at Burwood:* Tuesday 12 December at
5.30pm and Thursday 14 December at 11.00am.

Meeting point: Building HC, lecture theatre 13,
221 Burwood Highway, Burwood.



- **Geelong Campus at Wairn Ponds:**
Tuesday 12 December at 5.30pm

Meeting point:

Peter Thwaites lecture theatre on Alfred Deakin Drive, Pigdons Rd, Wairn Ponds

- **Geelong Waterfront Campus:**
Thursday 14 December at 11.00am

Meeting point:

Gheringhap Street entrance, Gheringhap Street Geelong

- **Warrnambool Campus tours please telephone:**
(03) 5563 3444

Gordon Institute of TAFE

Website: www.gordontafe.edu.au

Change of preference hotline: (03) 5225 0800

Monday 11 to Thursday 14 December (9.00am to 4.00pm)

Friday 15 December (9.00am to 12.00noon)

Monday 18 December (9.00am to 4.00pm)

GippsTAFE

Website: www.gippstafe.vic.edu.au

Change of preference hotline: (03) 5127 0277

Monday 4 to Friday 8 December (9.00am to 4.30pm)

Monday 11 to Friday 15 December (9.00am to 4.30pm)

Monday 18 December (9.00am to 4.30pm)

Grenadi School of Design Pty Ltd

Website: www.graphicschool.com

Change of preference hotline : 0403 755 954

Monday 4 to Friday 15 December (9.00am - 6.00pm)

Monday 18 December (9.00am - 6.00pm)

Holmes Institute

Website: www.holmesinstitute.edu.au

Change of preference hotline:

03 96622055 (9.00am to 5.00pm weekdays).

Holmesglen Institute of TAFE

Website: www.holmesglen.vic.edu.au

Change of preference hotline: (03) 9564 1555 or 9564 1640

For information session details: info@holmesglen.vic.edu.au

Institute for Design Entertainment and the Arts (IDEA)

Website: www.ideaonline.com.au

Change of preference hotline: (03) 9600 2832

Open Campus: 10.00am - 4.00pm daily at Level 2,
190 Queen Street Melbourne VIC 3000.

Bookings are essential.

JMC Academy

Website: www.jmccademy.edu.au

Change of preference hotline: (03) 9696 4117

Open Campus:

Monday 11 to Friday 15 December (10.00am to 4.00pm),
Level 1, 171 Bank Street, South Melbourne.

La Trobe University

Website: www.latrobe.edu.au/study/cop/

Change of preference hotline: 1300 135 045

Monday 11 to Thursday 21 December 2006 (9.00am-5.00pm).

Monash University

Website: www.monash.edu.au/cop

Telephone: (03) 9905 1320

Information sessions:

- **Gippsland Campus:** Tuesday 12 December
(3.00pm to 6.00 pm)

Location: Edison Mission Room, building 5N,

Monash University, Northways Road, Churchill, Victoria

- **Clayton Campus:** Wednesday 13 December
(10.00am to 2.00pm)

Location: Main Dining Room, First Floor – Campus Centre,
Building 10, Monash University, Wellington Road, Clayton,
Victoria

NMIT

Website: www.nmit.vic.edu.au

Change of preference hotline: 9269 1251

(9.00am - 5.00pm Monday 11 to Friday 15 December)

Information session:

Preston Campus: Tuesday 12 December (3.00 to 8.00 pm)

Location:

Canteen, Building G,
77 - 91 St Georges Rd, Preston.

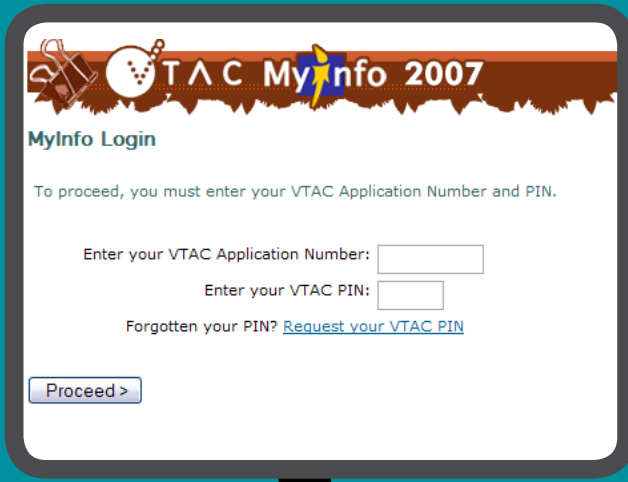
RMIT University

Website: www.rmit.edu.au/admissions

Change of preference hotline: 1800 117 648 (8.30am - 6.00pm
Monday 11 - Friday 15 December).

RMIT's undergraduate and TAFE programs are holding a drop
in information session on Thursday 14 December 2006
(12.30 - 2.30pm) at the City campus, Storey Hall,
336 Swanston Street, Melbourne.

For further information go to www.rmit.edu.au/cop



CHANGE OF PREFERENCE CLOSES FOR ALL APPLICANTS

12 NOON MONDAY 18TH DECEMBER

*EXCLUDES INTERSTATE Y12 AND IB APPLICANTS

What's your preference?

Southern School of Natural Therapies

Website: www.southernschool.com

Information session: Sunday 3 December (2.00pm).

Swinburne University of Technology

Website: www.swinburne.edu.au/cop

Change of preference hotline: 1300 368 777

Hotline dates and times:

Monday 11 to Friday 15 December (9.00am-5.30pm)

Monday 18 December (9.00am - 12.00pm)

Information Day and Sessions: Wednesday 13 December

Hawthorn campus, John Street Hawthorn 3122

Lilydale campus, Melba Avenue, Lilydale 3140

Prahran campus, 144 High Street, Prahran 3181

Wantirna campus, 369 Stud Road, Wantirna 3152

Croydon campus, 12-50 Norton Road, Croydon 3136

For session times and venues go to: www.swinburne.edu.au/cop

University of Ballarat

Website: www.ballarat.edu.au/cop

Change of preference hotline: 1800 811 711
(9.00am - 5.00pm Monday 11 to Friday 15 December).

Information Session:

Mt Hellen Campus: Wednesday 13 December
(5.30 - 7.30pm)

Location: University Drive, Mt Helen 3350.

University of Melbourne

Website: www.unimelb.edu.au

Change of preference hotline: 1800 801 662

Email: <http://unimelb.custhelp.com>

Course information day:

Parkville Campus: Thursday 14 December
(10.00am - 4.00pm).

The Law session will be repeated at 6.00 pm.

For a full program of events:

www.futurestudents.unimelb.edu.au/about/meetstaff/vic/cid/

Victoria University

Website: www.vu.edu.au

Change of preference hotline: (03) 9919 4110

Email advisory service: ccs@vu.edu.au

VU Course information and advice:

Monday to Friday (9.00am – 5.00pm) - parents and students welcome.

Location: The Centre for Commencing Students

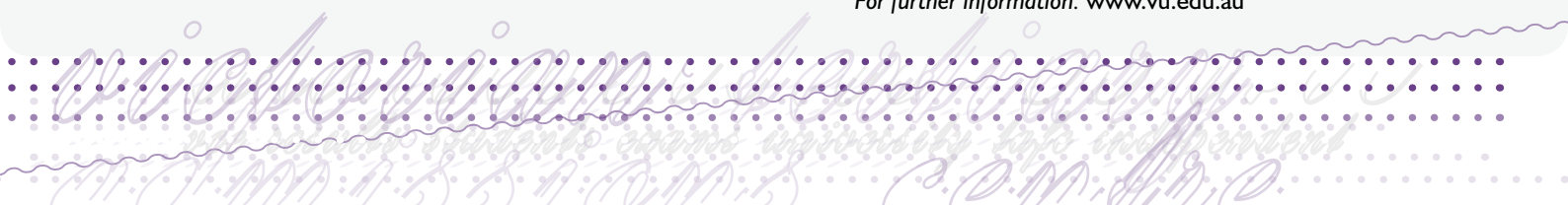
General Information sessions:

Monday 11 to Friday 15 December
(daily at 11.00am-12.00noon and 3.00 – 4.00pm)

Location: Lecture theatre G370, Building G,
Footscray Park Campus, Ballarat Road, Footscray.
Melways Ref. Map 42 C2.

Note: Campus tours are available after information sessions.

For further information: www.vu.edu.au



Change of preference hotline: (03) 9553 5959.

Monday 4 - Friday 15 December (9.00am - 5.00pm)

Monday 18 December (9.00am - 5.00pm)

Wodonga Institute of TAFE

Change of preference hotline: 02 6055 6606

Monday 11 - Friday 15 December (8.30am - 5.00pm)

Monday 18 December (8.30am - 12.00pm)

Email: courseinfo@wodonga.tafe.edu.au

Time to learn your ABCs!

Look out for these two publications in the coming months. The ABC of Scaling and the ABC of Offers are now available for you to download online.

www.vtac.edu.au/pdf/publications/abcoffers.pdf

www.vtac.edu.au/pdf/publications/abcscaling.pdf



IMPORTANT DATES FOR APPLICANTS

Documentation lodgement/Change of address

Closing date for change of address for mailing of ENTER statements (Current Year I2 students only)	5 December (5pm)
Final date for supplying supporting documentation and/or VTAC Pi form for undergraduate applications	15 December (5pm)
Final date for change of address for mailing of Round I offers (undergraduate applications)	11 January 2007 (12noon)

Results and ENTER

VCE results and ENTERs available electronically to applicants	11 December (7am)
VCE results and ENTERs received by applicants in the mail	12 December
IB (VIC) and International IB (VIC) Notional ENTER available on MyInfo	5 January 2007 (5pm)
International Baccalaureate (VIC) and International Baccalaureate (VIC) Notional ENTER in the mail	9 January 2007

Change of Preference (December)

Closes for all applicants (excluding interstate year I2 and International Baccalaureate applicants)	18 December (12noon)
Closes for ACT, NSW, NT, QLD, SA and TAS year I2 applicants	23 December (12noon)
Closes for WA year I2 and International Baccalaureate applicants (IB)	6 January 2007 (12noon)
* Change of Preference is closed to applicants between 7-11am Monday 11 December	

STAT/DULSTAT

Results for December sittings available on MyInfo	2 January 2007 (9am)
---	----------------------

Main undergraduate offers (Round I)

Round I offers available on MyInfo	16 January 2007 (9am)
Round I offers in press/mail	16 January 2007

International offer round

Offers available on MyInfo	9 January 2007 (2pm)
Offer letters received in the mail	10 January 2007

List of amendments from previous VTAC Bulletins

Previous Bulletins are available on the VTAC website at: www.vtac.edu.au/publications/bulletins.html

Institution and Code	Course Title	Campus	Changed/Activated
Cancelled Courses for 2007			
Universities			
Australian Catholic University			
12062 (Fee)	Hotel Management	Melbourne	August 2006
91131 (CSP F/T), 91132 (Fee F/T)	Bachelor of Education—Primary (Graduate Entry Teaching)	Ballarat	August 2006
91141 (CSP P/T), 91142 (Fee P/T)	Bachelor of Education—Primary (Graduate Entry Teaching)	Ballarat	August 2006
Australian Maritime College			
19061 (CSP), 19063 (Int. Fee)	Aquaculture Management	Beauty Point	November 2006
Charles Sturt University			
13231 (CSP), 13233 (Int. Fee)	Speech and Hearing Science	Albury-Wodonga	September 2006
13251 (CSP), 13253 (Int. Fee)	Early Childhood Teaching/Speech and Hearing Science	Albury-Wodonga	October 2006
Deakin University			
15391 (CSP), 15392 (Fee), 15393 (Int. Fee)	Wine Science	Geelong	July 2006
La Trobe University			
24801 (CSP), 24802 (Fee), 24803 (Int. Fee)	Science	Bendigo	October 2006
20121 (CSP), 20122 (Fee), 20123 (Int. Fee)	Nursing Science	Albury-Wodonga	November 2006
21421 (CSP), 21422 (Fee), 21423 (Int. Fee)	Nursing Science	Bundoora	November 2006
24061 (CSP), 24062 (Fee), 24063 (Int. Fee)	Nursing Science	Bendigo	November 2006
Monash University			
27991 (CSP), 27992 (Fee), 27993 (Int. Fee)	Retail Management	Caulfield	August 2006
27411 (CSP), 27412 (Fee), 27413 (Int. Fee)	Risk Management	Caulfield	August 2006
26171 (CSP), 26172 (Fee), 26173 (Int. Fee)	Regional and Urban Planning	Berwick	November 2006
Swinburne University of Technology			
34011 (CSP), 34012 (Fee), 34013 (Int. Fee)	Photonics	Hawthorn	October 2006
Victoria University			
40283 (Int. Fee)	Retail Commerce	Footscray Park	October 2006
40153 (Int. Fee)	Retail Commerce/Marketing	Footscray Park	October 2006
40803 (Int. Fee)	International Trade/Retail	Footscray Park	October 2006
43911 (CSP), 43912 (Fee), 43913 (Int. Fee)	Computer Mediated Art	St Albans	November 2006
41151 (CSP)	Dermal Therapies	City King	November 2006
TAFEs			
Box Hill Institute of TAFE			
51001(TAFE)	Multimedia (Advanced Diploma)	Whitehorse	August 2006
Gordon Institute of TAFE			
59001 (TAFE)	Built Environment	Geelong	October 2006
Northern Melbourne Institute of TAFE			
69112 (Fee), 69113 (Int. Fee)	Accounting (Associate Degree)	Preston	July 2006
68433 (Int. Fee)	Australian Popular Music (Degree)	Fairfield	October 2006
68463 (Int. Fee)	Equine Studies (Degree)	Epping	October 2006
68473 (Int. Fee)	Applied Aquaculture (Degree)	Epping	October 2006
68021 (TAFE)	Engineering-Mechatronics	Heidelberg	November 2006

Institution and Code	Course Title	Campus	Changed/Activated
Swinburne University of Technology TAFE			
70411 (TAFE)	Information Technology	Lilydale	November 2006
71321 (TAFE)	Information Technology	Wantirna	November 2006
71001 (TAFE)	Information Technology (Network Security)	Wantirna	November 2006
Victoria University TAFE			
80091 (TAFE)	Conservation and Land Management (Cert IV)	Werribee	September 2006
80951 (CSP)	Justice	St Albans	October 2006
Wodonga Institute of TAFE			
88041 (TAFE)	Sport (Sport Development) (Diploma)	Wodonga	September 2006
88691 (TAFE)	Food Science & Technology	Wodonga	November 2006
88491 (TAFE)	Laboratory Techniques (Certificate IV)	Wodonga	November 2006
88001 (TAFE)	Visual Arts	Wodonga	November 2006
ITCs			
Australian Academy of Design			
91502 (Fee), 91503 (Int. Fee)	Graphic Design (Diploma)	Docklands	November 2006
91542 (Fee), 91543 (Int. Fee)	Multimedia (Diploma)	Docklands	November 2006
91532 (Fee), 91533 (Int. Fee)	Visual Arts	Docklands	November 2006
Australian Institute of Public Safety			
91312 (Fee), 91313 (Int. Fee)	Public Safety	City	August 2006
91352 (Fee), 91353 (Int. Fee)	Security	City	August 2006
ESTT College of Natural Medicine			
95692 (Fee)	Remedial Therapies (Certificate IV)	Waverley Gardens	November 2006
JMC Academy			
95432 (Fee), 95433 (Int. Fee)	Digital Television Production Management	Melbourne	November 2006

New Courses for 2007

Universities

Deakin University

15281 (CSP), 15282 (Fee), 15283 (Int. Fee)	Biomedical Science	Geelong	August 2006
15261 (CSP), 15262 (Fee), 15263 (Int. Fee)	Health Sciences	Geelong	August 2006
18211 (CSP), 18212 (Fee), 18213 (Int. Fee)	Health Sciences	Warrnambool	August 2006
18191 (CSP), 18192 (Fee), 18193 (Int. Fee)	Law (on campus)	Warrnambool	August 2006
14421 (CSP), 14422 (Fee), 14423 (Int. Fee)	Sport Development	Melbourne	August 2006
14341 (CSP), 14342 (Fee), 14343 (Int. Fee)	Tourism/Management	Melbourne	August 2006

La Trobe University

24241 (CSP), 24242 (Fee), 24243 (Int. Fee)	Science	Bendigo	August 2006
24341 (CSP), 24342 (Fee), 24343 (Int. Fee)	Science/Science Education	Bendigo	August 2006

Monash University

29012 (Fee)	Physiotherapy	Peninsula	July 2006
28151 (CSP)	Medicine/Surgery (CSP Extended Rural Cohort)	Clayton	August 2006
28861 (CSP), 28862 (Fee), 28863 (Int. Fee)	Engineering/Pharmaceutical Science	Clayton	August 2006
29081 (CSP), 29082 (Fee), 29083 (Int. Fee)	Nursing/Emergency Health	Peninsula	August 2006
30461 (CSP), 30462 (Fee)	Sports Promotion and Events Management	Gippsland	August 2006
29221 (CSP)	Health Science	Peninsula	August 2006

Institution and Code	Course Title	Campus	Changed/Activated
RMIT University			
32151 (CSP), 32152 (Fee), 32153 (Int. Fee)	Statistics	City	August 2006
32381 (CSP), 32382 (Fee), 32383 (Int. Fee)	Technology Studies (Information Technology)	City	August 2006
Swinburne University of Technology			
35003 (Int. Fee)	Business Systems Design	Lilydale	August 2006
34213 (Int. Fee)	Network Design and Security	Hawthorn	August 2006
Victoria University			
43071 (CSP), 43073 (Int. Fee)	Education (P-12)	St Albans	July 2006
43081 (CSP), 43083 (Int. Fee)	Education (P-12)-Science Teaching	St Albans	July 2006
40331 (CSP)	Kyinandoo (Indigenous Studies)	Footscray Park	August 2006
40321 (CSP)	Logistics Analysis	Footscray Park	August 2006
40341 (CSP)	Occupational Health and Safety	St Albans/Footscray Park	August 2006
TAFEs			
Box Hill Institute			
51142 (Fee) Broadcasting (Television)	Elgar	July 2006	
51491 (TAFE)	Library and Information Services (Adv Dip)	Nelson	July 2006
51502 (Fee)	Computer Systems (Networking) (Associate Degree)	Nelson	August 2006
Chisholm Institute of TAFE			
54451 (TAFE)	Administration/Human Resources	Berwick	August 2006
54461 (TAFE)	Logistics and Supply Chain	Dandenong	August 2006
Gordon Institute of TAFE			
59131 (TAFE)	Management/Marketing (Cert IV, Dip)	Geelong	August 2006
59141 (TAFE)	Management/Human Resources (Cert IV, Dip)	Geelong	August 2006
South West Institute of TAFE			
75071 (TAFE)	Children's Services	Glenormiston	July 2006
University of Ballarat TAFE			
74871 (TAFE)	Theatre Arts	SMB	August 2006
ITCs			
Holmes Institute			
89642 (Fee), 89643 (Int. Fee)	Professional Accounting	City	July 2006
International College of Creative Arts			
94512 (Fee)	Multimedia	South Melbourne	August 2006

Course campus changes

Deakin University			
15431 (CSP), 15432 (Fee), 15433 (Int. Fee)	Social Work (on campus)	Geelong changed to Geelong Waterfront	July 2006
14381 (CSP), 14382 (Fee), 14383 (Int. Fee)	Science and Technology (Dean's Scholars Program)	Melbourne changed to All Campuses	August 2006
Victoria University TAFE			
85211 (TAFE)	Logistics and Supply Chain	Sunshine changed to Footscray Nicholson	August 2006
40341 (TAFE)	Occupational Health and Safety	Footscray Park changed to St Albans/Footscray Park	September 2006
84031 (TAFE)	Lifestyle and Leisure	City King changed to Footscray Nicholson	November 2006

Course name changes

Deakin University

14021 (CSP), 14022 (Fee), 14023 (Int. Fee)	Nursing/Health Promotion changed to Nursing/Public Health and Health Promotion	Melbourne	August 2006
14621 (CSP), 14622 (Fee), 14623 (Int. Fee)	Teaching-Secondary/Science changed to Teaching-Science/Science	Melbourne	August 2006

Monash University (Graduate Entry Teaching)

94111 (CSP F/T), 94112 (Fee F/T), 94121 (CSP P/T), 94122 (Fee P/T)	Graduate Diploma in Education (Secondary) changed to Graduate Diploma in Education (Secondary) (on-campus/mixed mode)	Clayton	August 2006
---	--	---------	-------------

University of Ballarat TAFE

74181 (TAFE)	Horticulture (Cert IV) changed to Horticulture (Diploma)	SMB	October 2006
--------------	--	-----	--------------

Victoria University

40801 (CSP)	Retail Management/International Trade changed to International Trade/Retail Commerce	Footscray Park	October 2006
40151 (CSP)	Retail Management/Marketing changed to Retail Commerce/Marketing	Footscray Park	October 2006
40281 (CSP)	Retail Management changed to Retail Commerce	Footscray Park	October 2006

Victoria University TAFE

79101 (TAFE)	Multimedia changed to Multimedia (Advanced Diploma)	City Flinders	
81591 (TAFE)	Tourism (Operations Management) changed to Tourism (Operations Management) (Certificate IV)	Werribee	

Changes to Graduate Entry Teaching methods

Deakin University

92251 (CSP F/T), 92252 (Fee F/T), 92261 (CSP P/T), 92262 (Fee P/T)	Bachelor of Teaching (Primary and Secondary) Double method DANCE code is 202 not 102	Off Campus	August 2006
92271 (CSP P/T), 92272 (Fee P/T)	Bachelor of Teaching (Primary and Secondary) Double method SOSE code is 238 not 138	Geelong	August 2006

Monash University

94221 (CSP F/T), 94222 (Fee F/T)	Graduate Diploma of Education (Secondary) (on-campus/mixed mode) The single methods 121 English, 178 Mathematics and 181 Science are available in on campus mode (Gippsland) and off-campus mode.	Gippsland	August 2006
----------------------------------	--	-----------	-------------

New Graduate Entry Teaching course entry

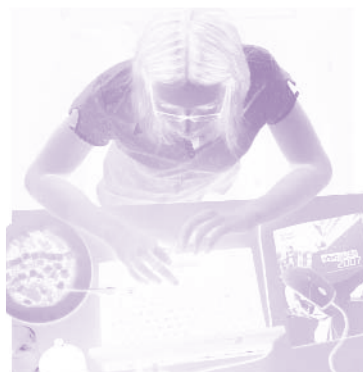
Monash University

94221 (CSP F/T on-campus/mixed), 94222 (Fee F/T on-campus/mixed)	Graduate Diploma of Education (Secondary)	Gippsland	August 2006
---	---	-----------	-------------

Streams Added to Existing Courses

Swinburne University of Technology

34411 (CSP), 34412 (Fee), 34413 (Int. Fee)	Bachelor of Business: new stream Information Systems	Hawthorn	August 2006
--	--	----------	-------------



Apply yourself NOW!

**VTAC very late applications close on
8th December, 5pm
for 2007 tertiary places**

Apply now to avoid missing out!

www.vtac.edu.au

